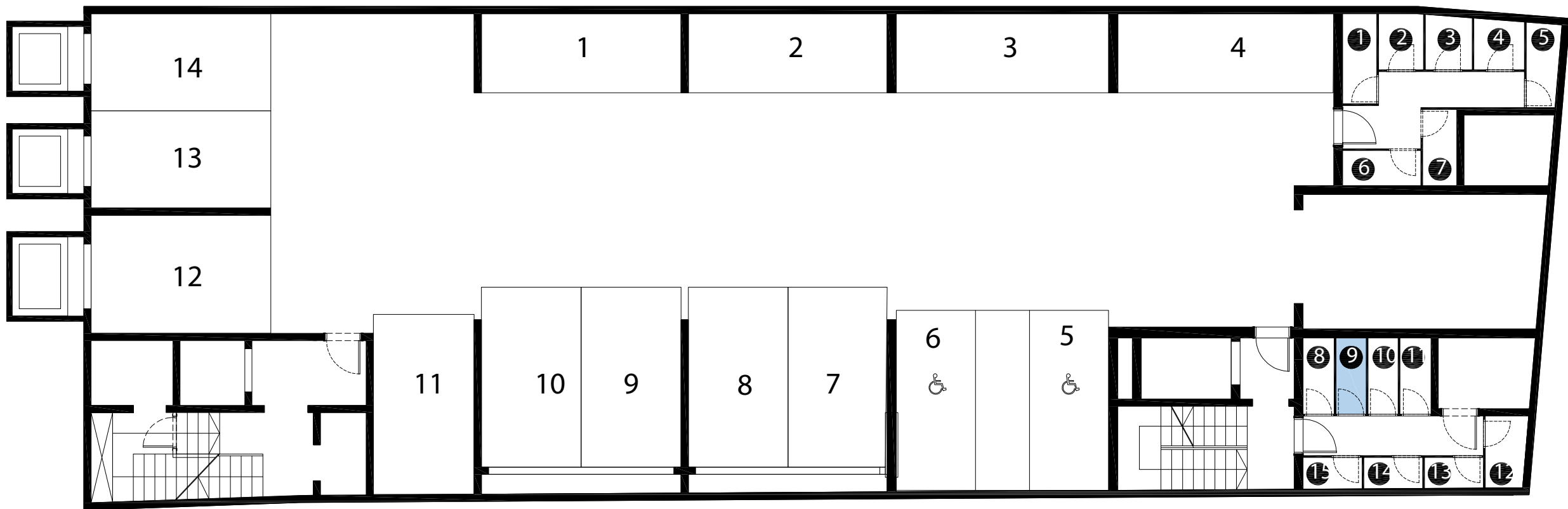


Spremište Spr.09

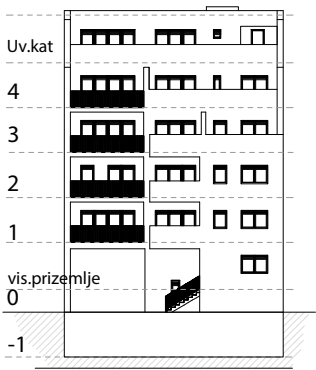


-1 etaža

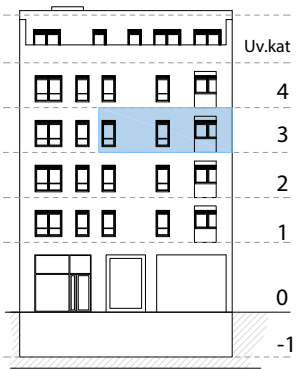


Stan S 09 54,03 m²

3 kat	
Površina stana ukupno	52,70 m ²
* Spremište Spr.09 (1,78 ² * koef.0,75)	1,33 m ²
Površina Sveukupno:	54,03 m ²



ZAPADNO PROČELJE



ISTOČNO PROČELJE